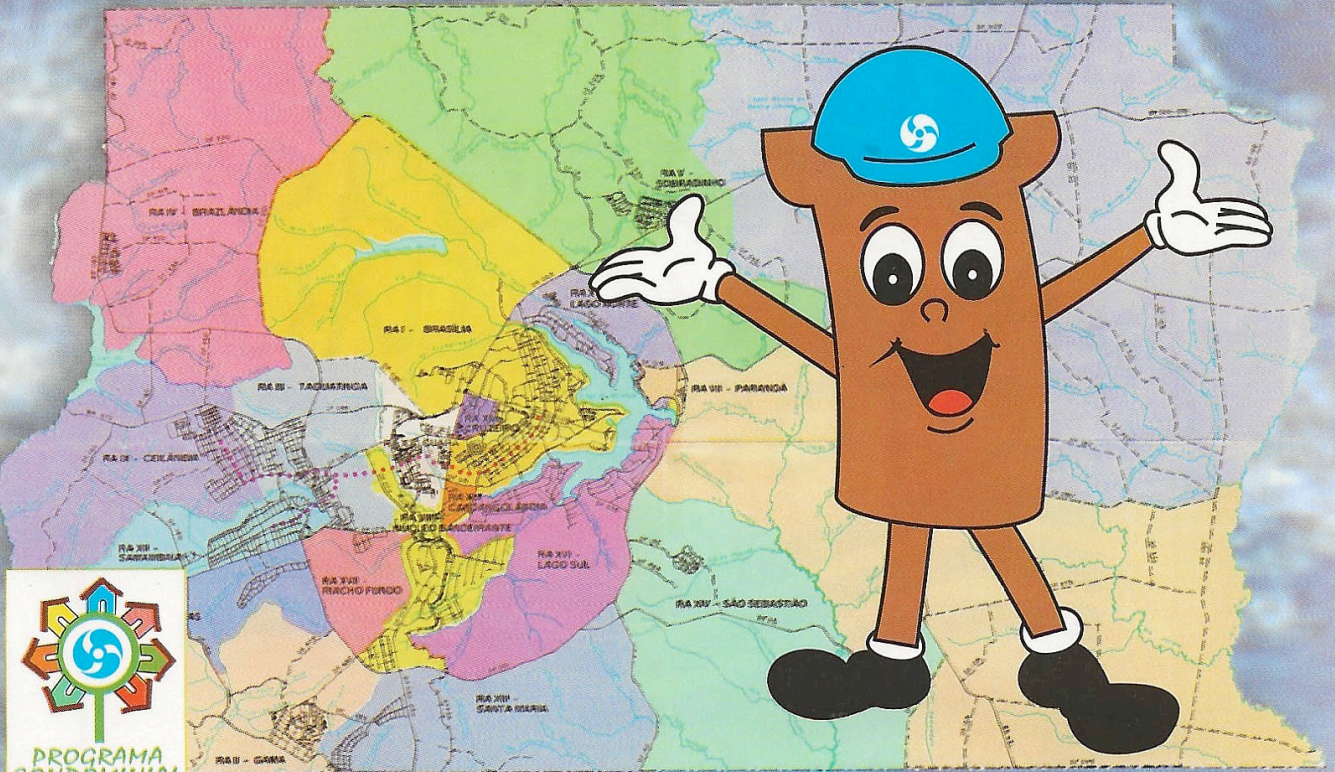




THE LITTLE PIPE

PRESENTS

“THE CONDOMINIAL SEWERAGE SYSTEM”



CONDOMINIAL SEWERAGE SYSTEM INSTRUMENT FOR THE UNIVERSILIZATION OF SERVICE

CAESB is implementing the Condominial Sewerage System in your city. The participation of every citizen is essential for the implementation and conservation of this system in order for us to resolve the environmental and public health problems that the absence of a sewerage system brings.

This model is based, fundamentally, on a combination of community participation and appropriate technology. The former favors the mobilization of resources, because it seeks to incorporate community energy into finding the solution to their sewage sanitation problems; the appropriate technology provides simplicity in operation and maintenance and drastic savings in implementation, when compared to conventional sewerage systems, thanks to shorter pipe lengths and shallower depths in the collection network.

The basic principle which guides this system is service for everyone, indiscriminantly.

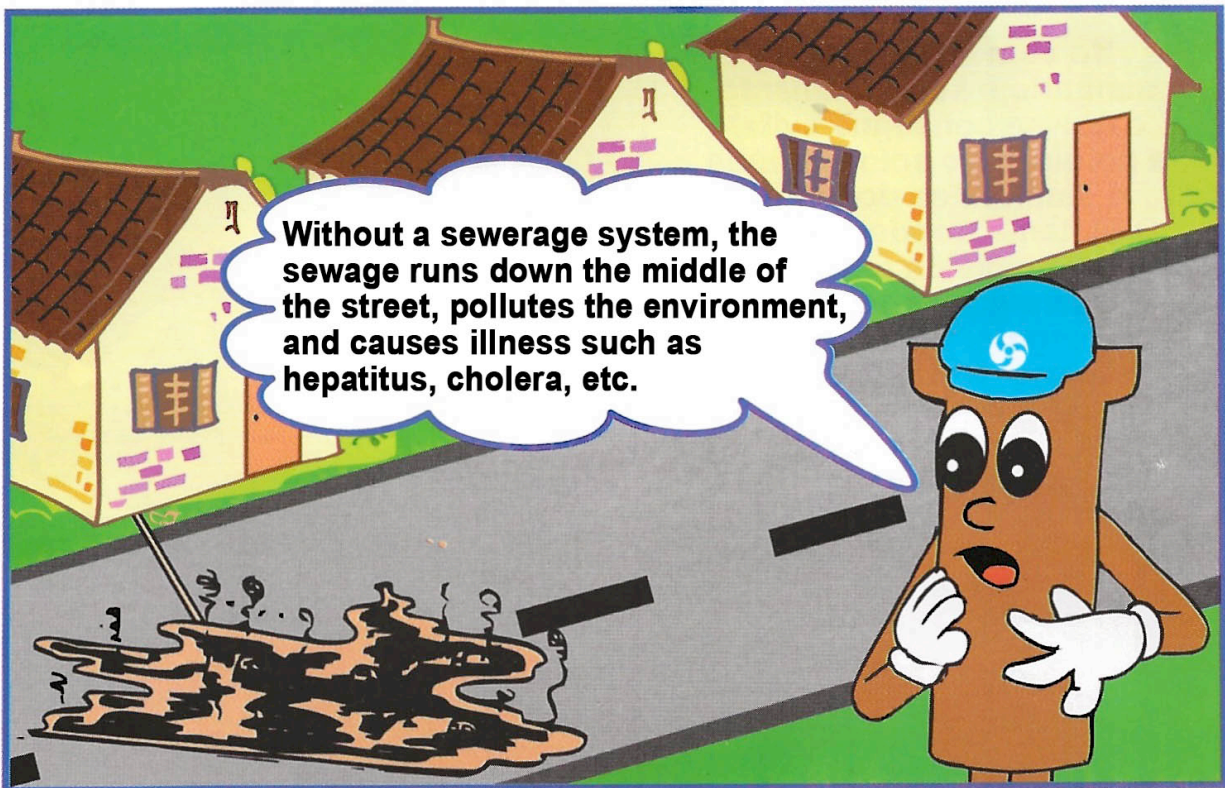
Brasilia is proving to Brazil that the Condominial System is the alternative which optimizes the application of public resources and CAESB is becoming the national and international reference for the application of this model of sanitation system

If you participate, in short, we would have a cleaner, more healthy city with a higher quality of life for you!

GERÊNCIA DE MOBILIZAÇÃO COMUNITÁRIA - ESOA
ESO/DE



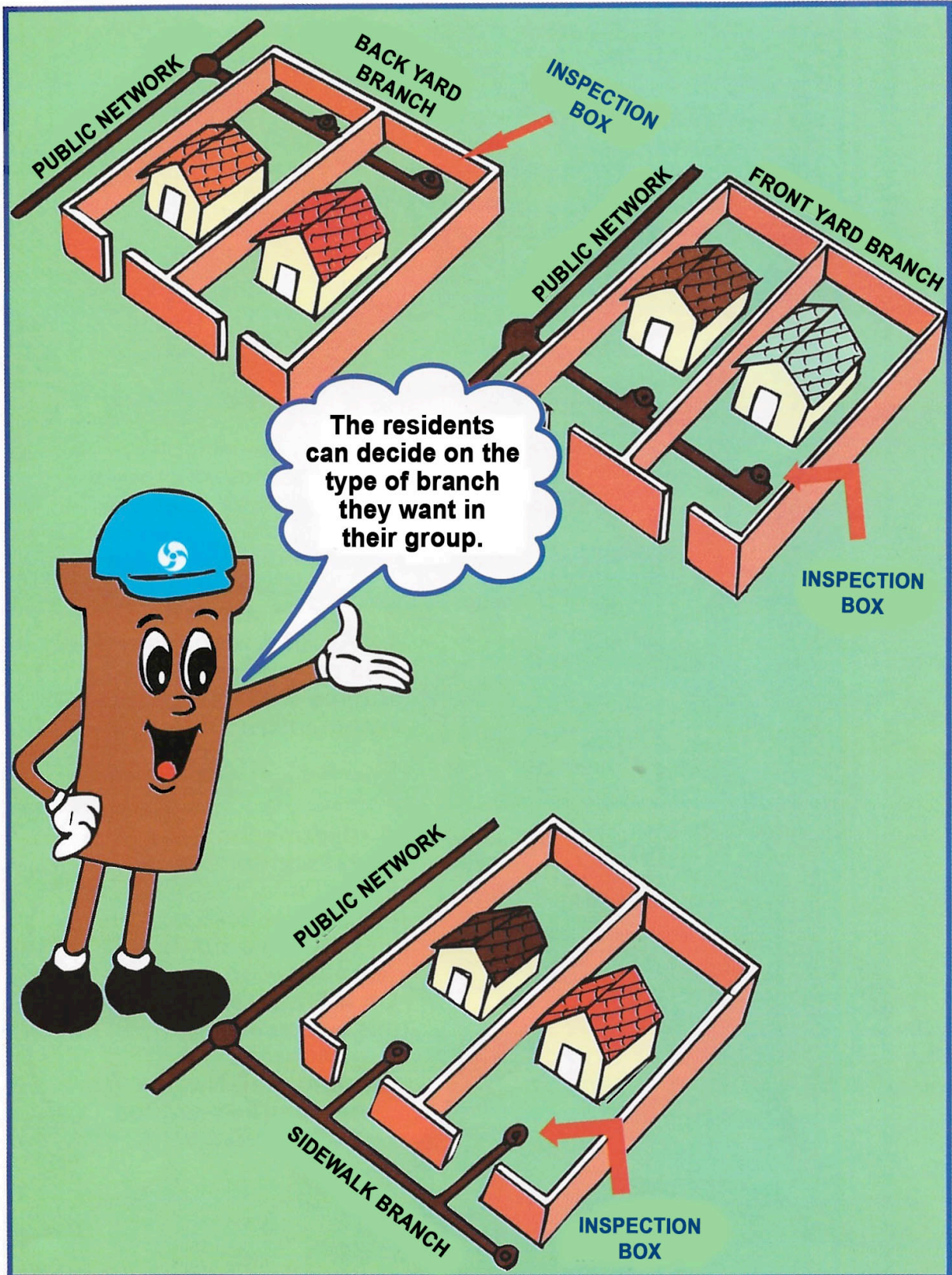
THE PROBLEM WITH SANITATION IN BRAZIL



SOLUTION: CONDOMINIAL SYSTEM



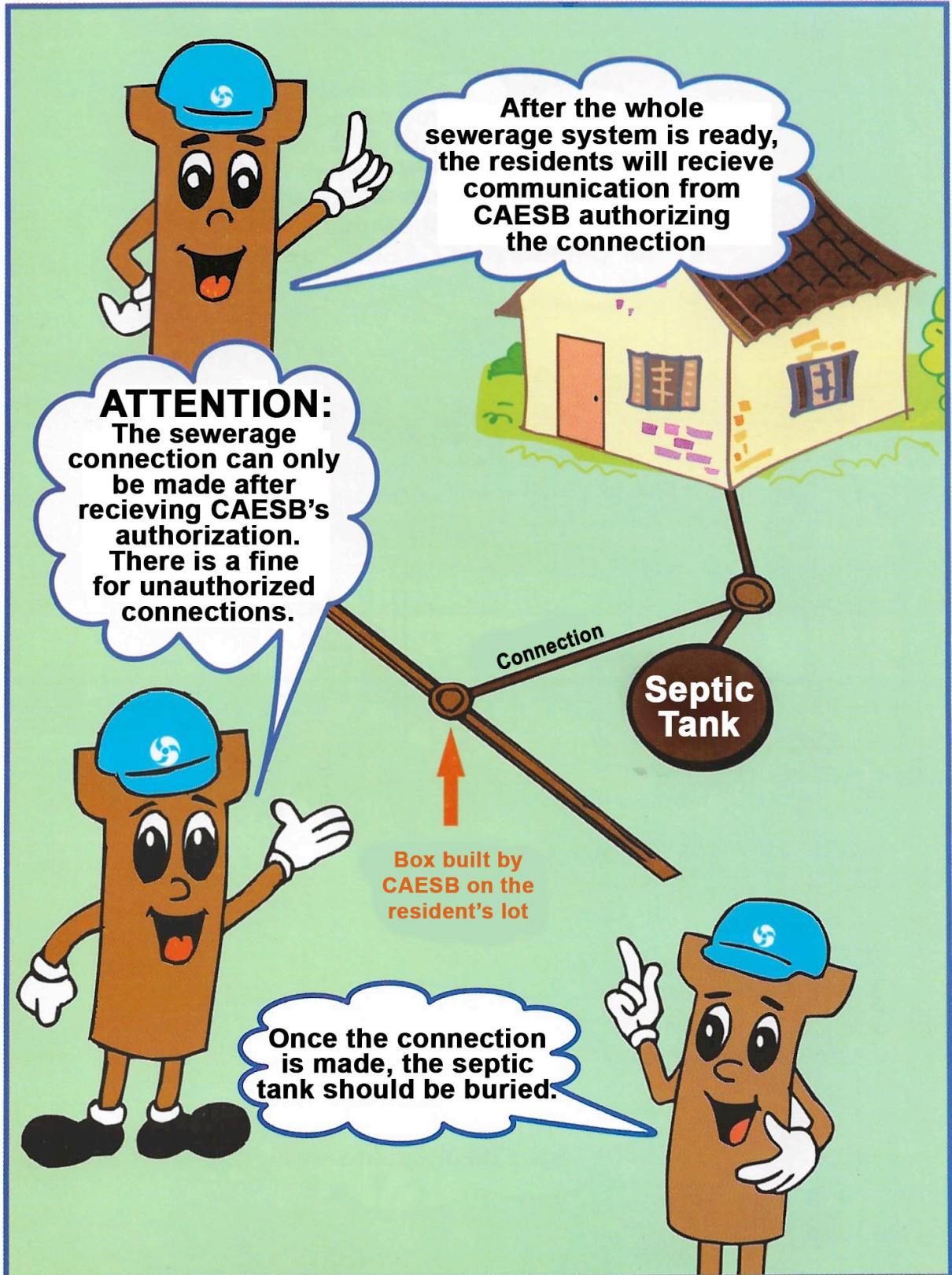
CONDOMINIAL SEWERAGE BRANCHES



DIVISION OF RESPONSIBILITY IN IMPLEMENTATION

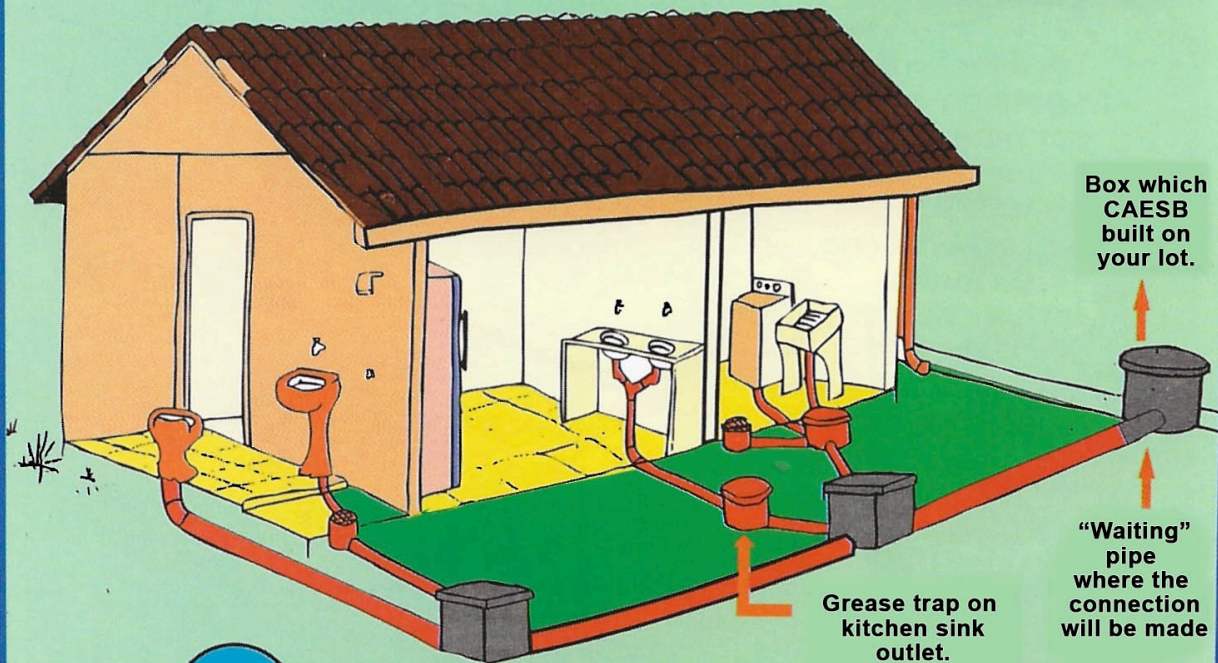
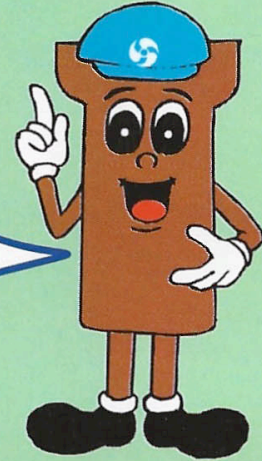


HOW TO MAKE THE SEWERAGE CONNECTION



WHAT TO CONNECT TO THE BRANCH

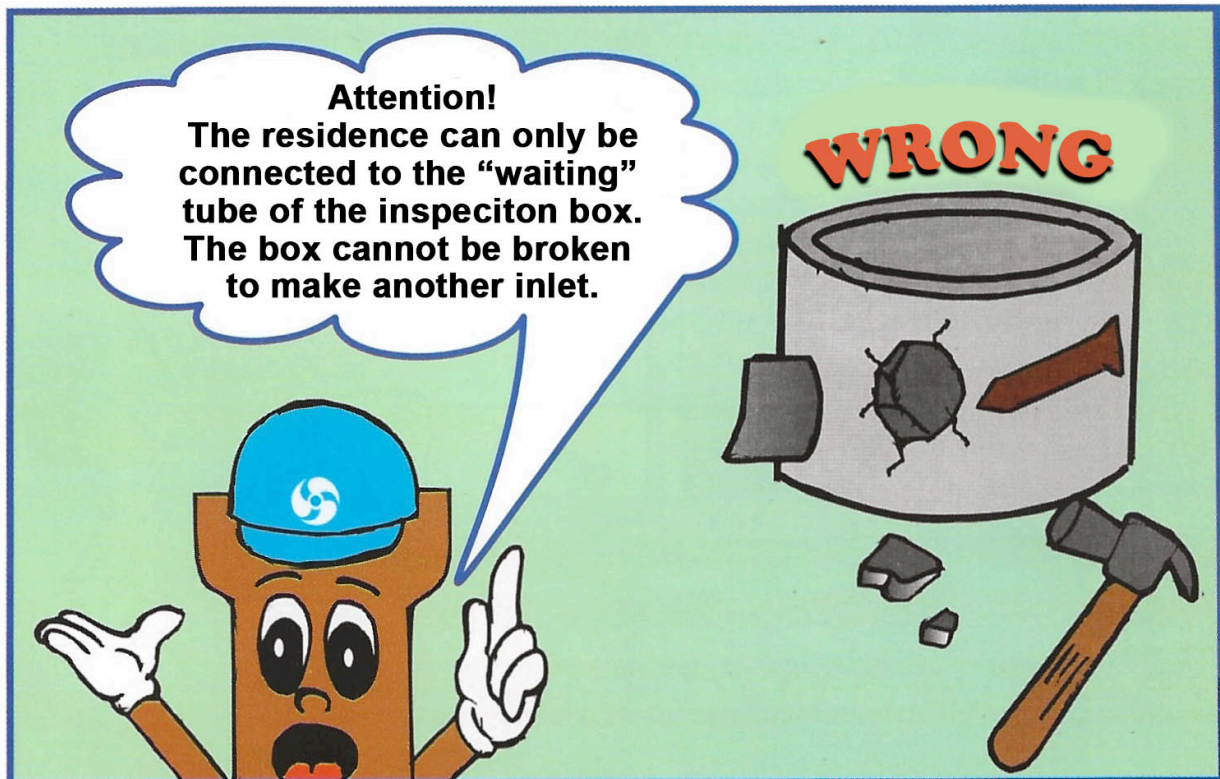
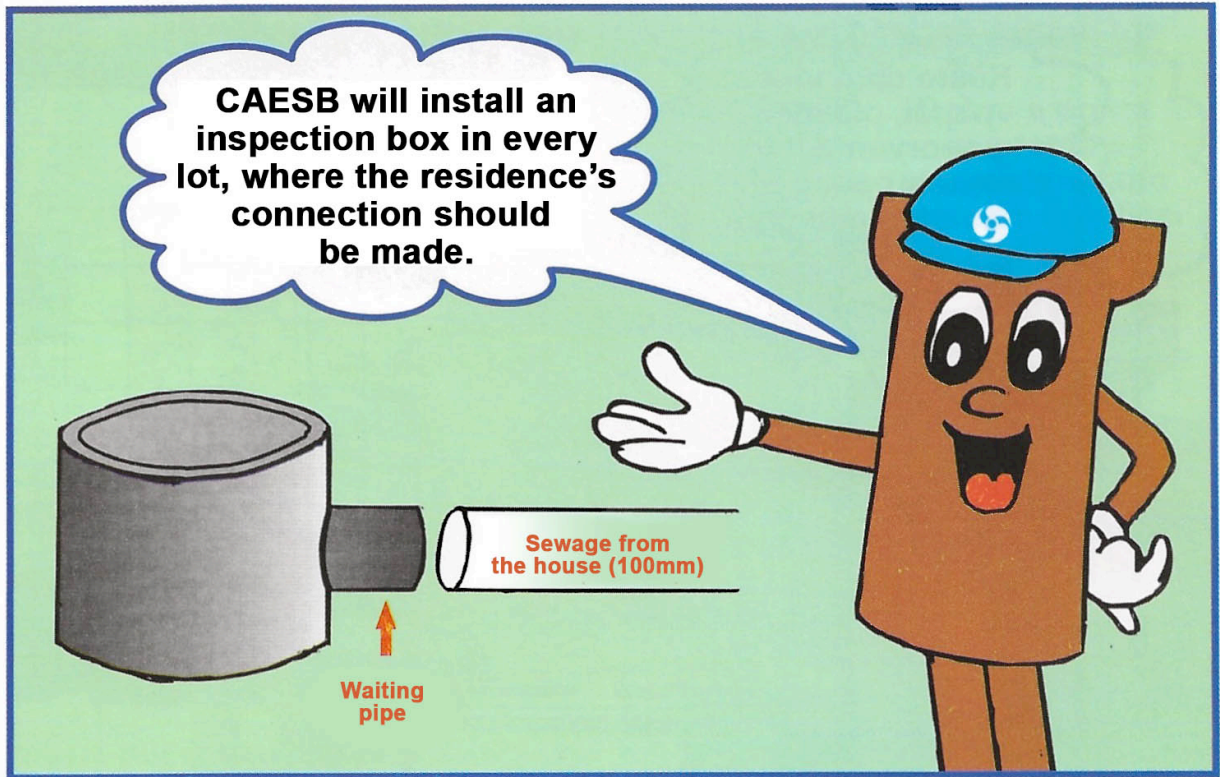
All of your house's sewage should come together in a sidewalk cleanout box which should be connected to the box built by CAESB on your lot.



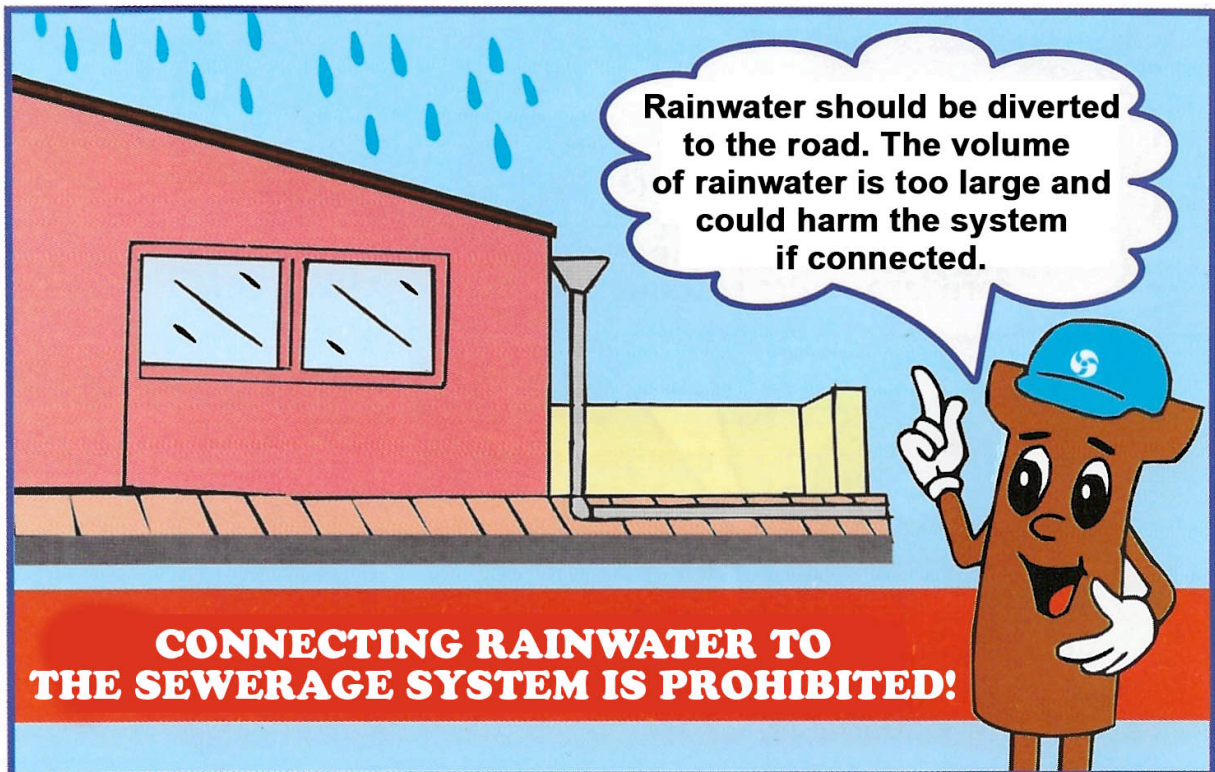
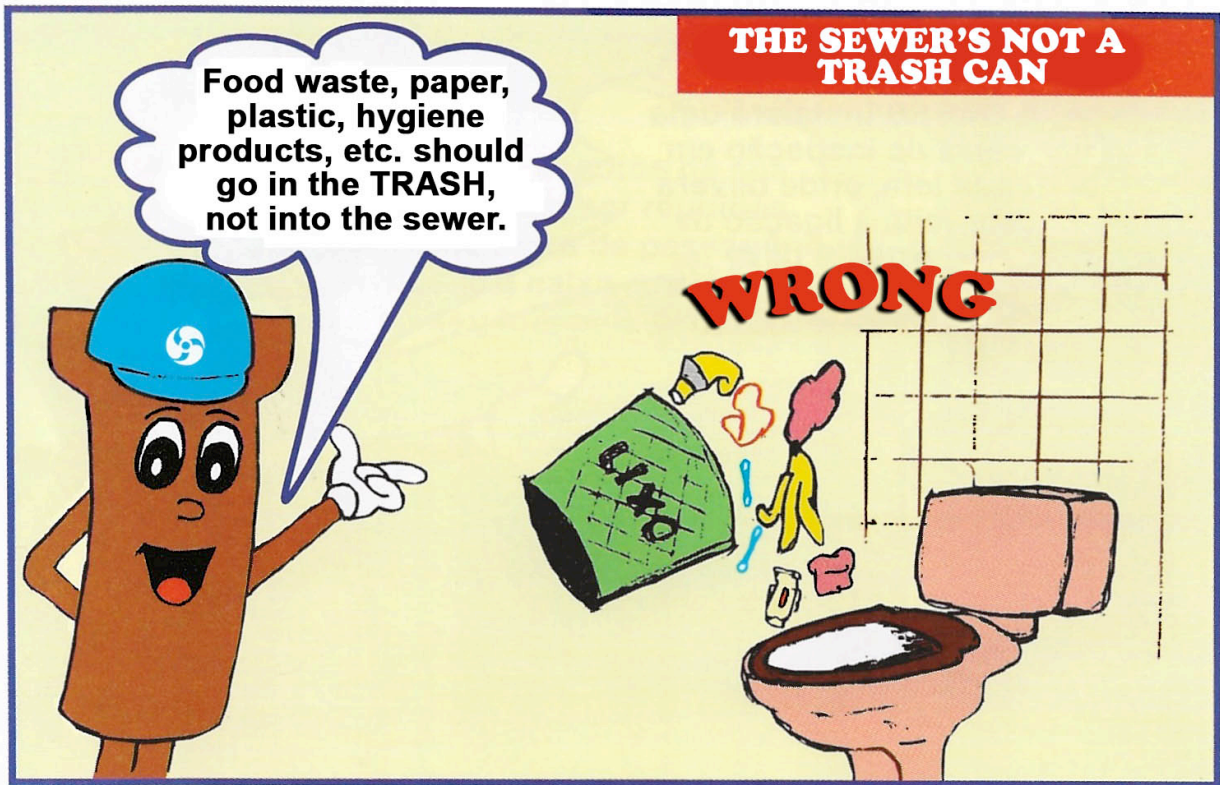
Don't forget to install the grease trap on the kitchen sink's outlet. Oh, and rain water cannot be connected to the system.



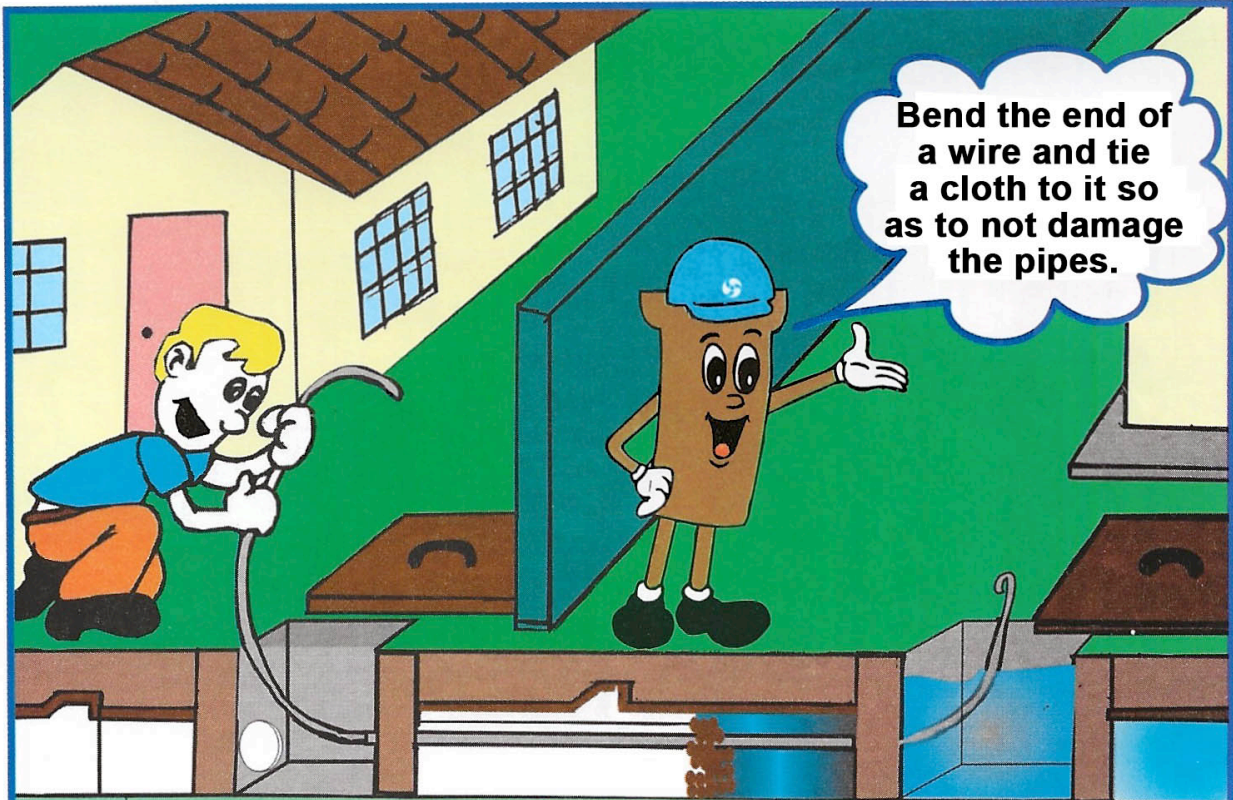
INSPECTION BOX



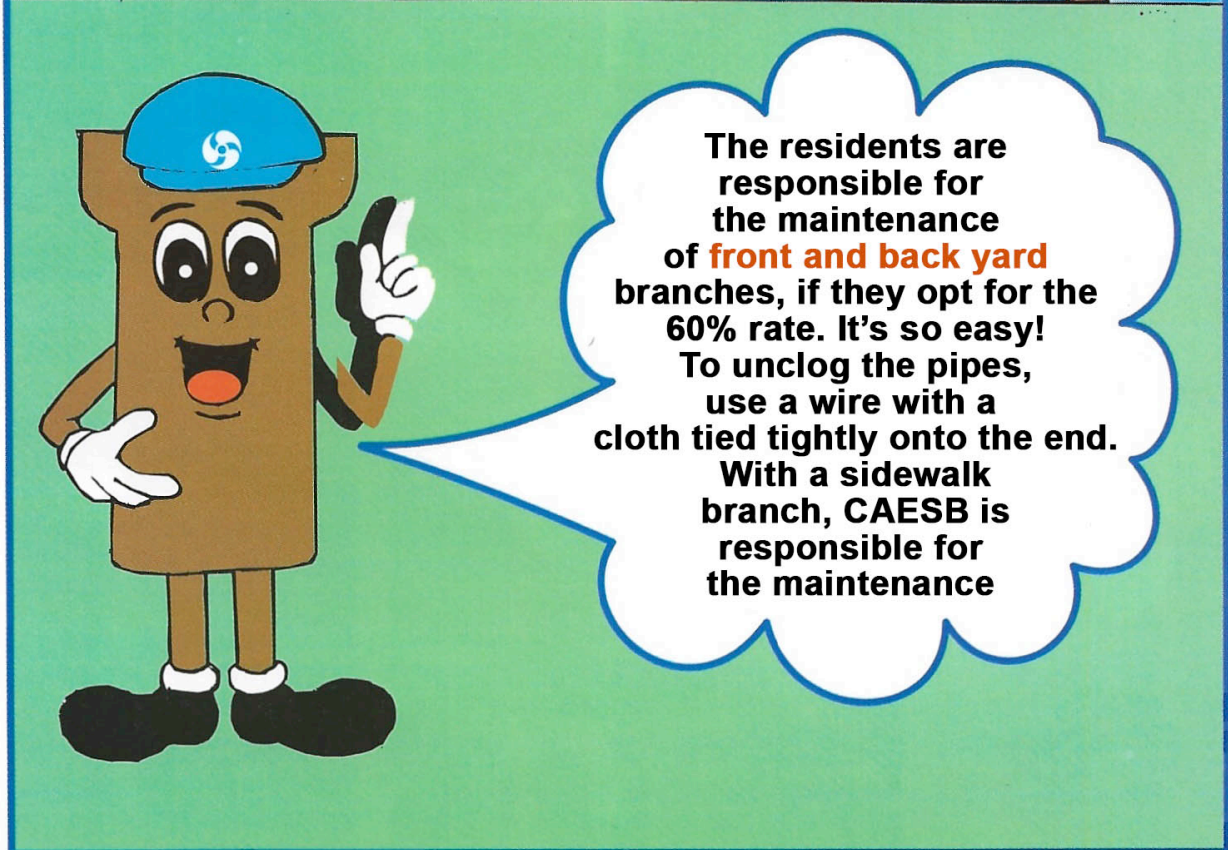
HOW TO CARE FOR THE SEWERAGE SYSTEM



MAINTENANCE OF CONDOMINIAL SYSTEMS

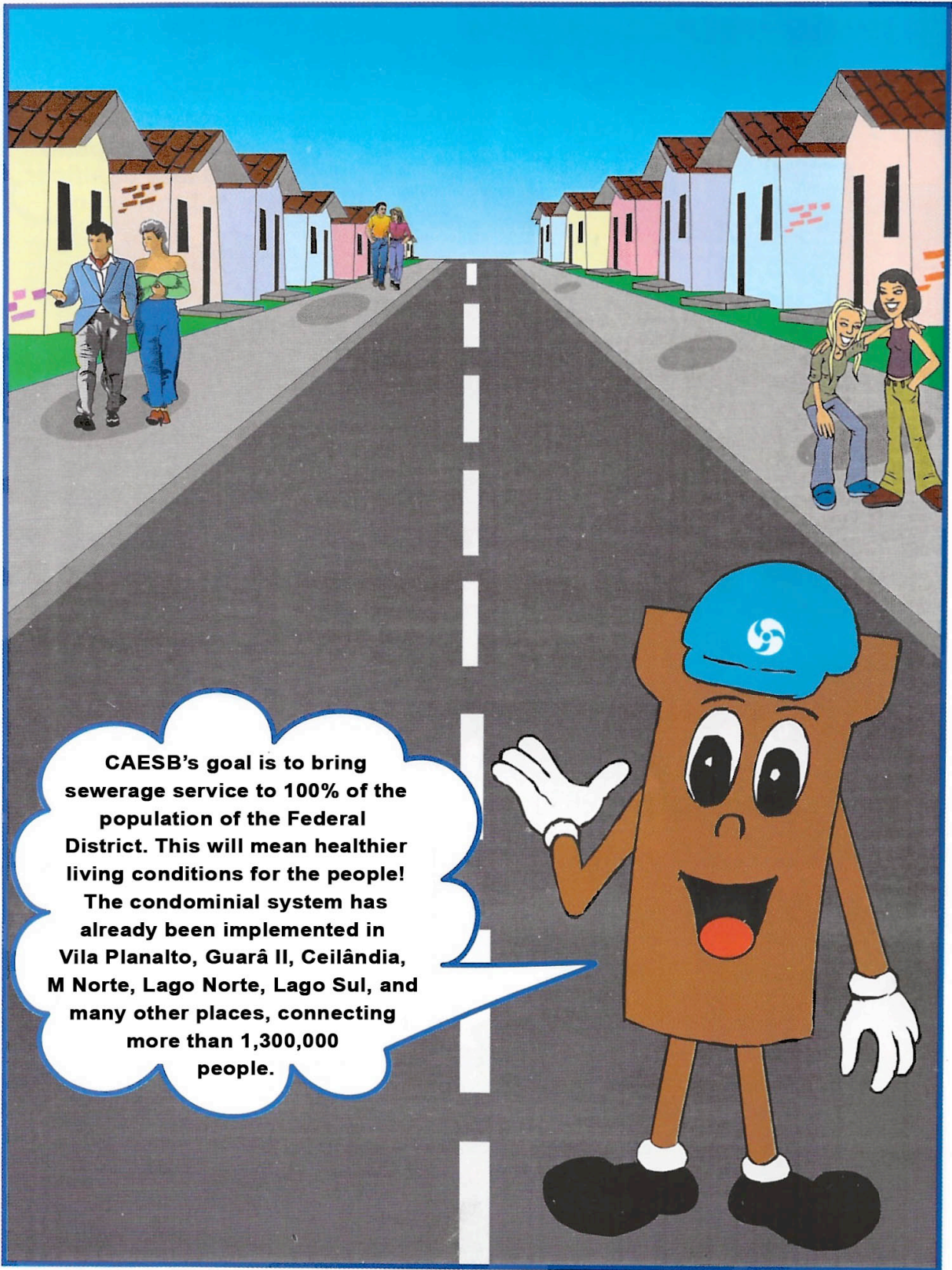


Bend the end of a wire and tie a cloth to it so as to not damage the pipes.



The residents are responsible for the maintenance of **front and back yard** branches, if they opt for the 60% rate. It's so easy! To unclog the pipes, use a wire with a cloth tied tightly onto the end. With a sidewalk branch, CAESB is responsible for the maintenance

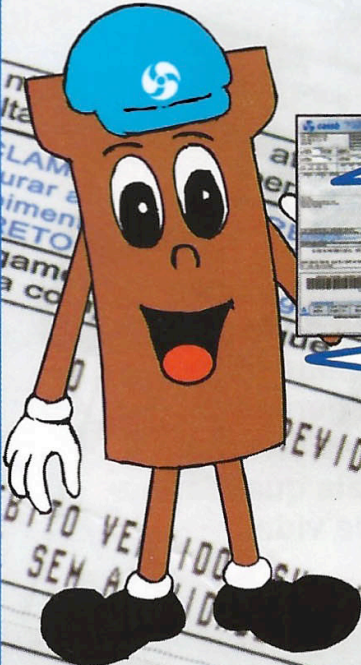
CAESB'S GOAL



CAESB's goal is to bring sewerage service to 100% of the population of the Federal District. This will mean healthier living conditions for the people! The condominal system has already been implemented in Vila Planalto, Guarã II, Ceilândia, M Norte, Lago Norte, Lago Sul, and many other places, connecting more than 1,300,000 people.



SEWERAGE COSTS AND FEES



The cost of the implementation of the system can be paid in installments.

For a sidewalk branch, the full service fee must be paid. For front and back yard branches, you can pay only 60% of the fee (in which case the residents are in charge of maintenance) or pay the full 100% (in which case CAESB will take care of maintenance)

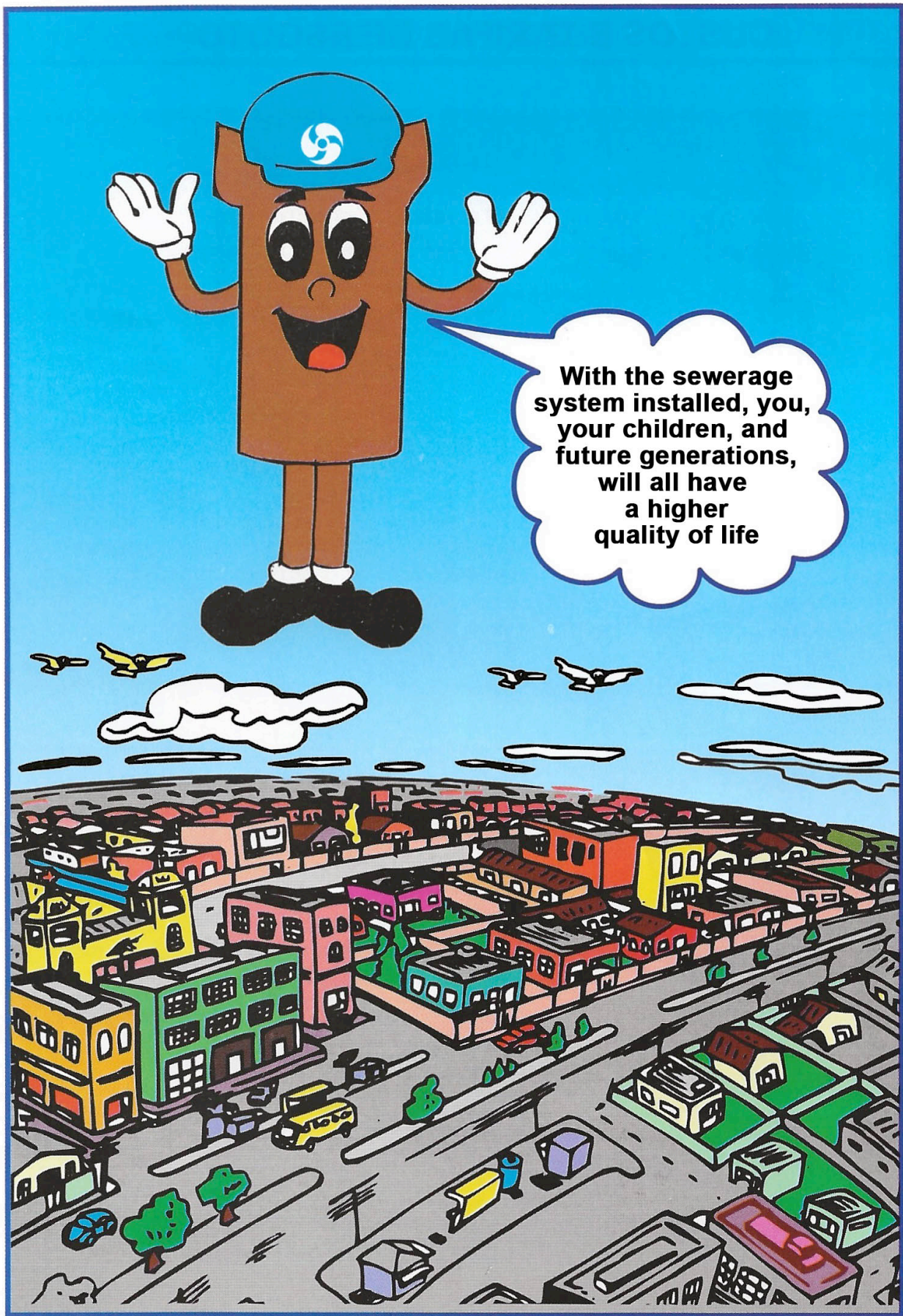


Bring any questions or concerns to CAESB's local office in your city.



The CAESB logo, consisting of a stylized blue and white circular emblem, is positioned above the word "caesb" in a white, lowercase, sans-serif font. Below this, there is a stylized illustration of a building with an orange facade and several windows.





With the sewerage system installed, you, your children, and future generations, will all have a higher quality of life

